



VITALITY

RESIDENCE

THE PLACE
OF YOUR POWER

by **SEGREX** & **LARUS GROUP**



VITALITY

RESIDENCE

PREMIUM
RESIDENTIAL
COMPLEX

JUMEIRAH
VILLAGE CIRCLE
DUBAI





IS A PLACE OF STRENGTH, WHERE RESIDENTS CAN RECHARGE THEIR ENERGY AND TAKE A BREAK FROM BUSY WORK, WHILE REMAINING IN THE CENTRE OF EVENTS. THIS RESIDENTIAL COMPLEX WAS CREATED FOR THOSE WHO WANT TO LIVE LIFE TO THE FULLEST AND HAVE TIME FOR EVERYTHING. A PRODUCTIVE DAY'S WORK, AN EVENING WITH LOVED ONES AND THE LIGHTS OF DUBAI AT NIGHT - THOSE WHO CHOOSE VITALITY RESIDENCE WILL HAVE ENOUGH ENERGY AND TIME FOR EVERYTHING.





1

BASEMENT

2

PARKING FLOORS

8

LIVING FLOORS

1q 2026

HANDOVER

165

MODERN LUXURY
APARTMENTS



ROOF TOP

LIVING
FLOORS

1ST
FLOOR

PARKING
FLOORS

GROUND
FLOOR

BASEMENT





VITALITY

RESIDENCE

TRANSPORT
ACCESSIBILITY



15

MINUTES TO
JBR BEACHES
AND PROMENADE

15

MINUTES TO
PALM JUMEIRAH

20

MINUTES TO
MALL OF EMIRATES

10 DISTRICT,
JUMEIRAH VILLAGE CIRCLE,
DUBAI

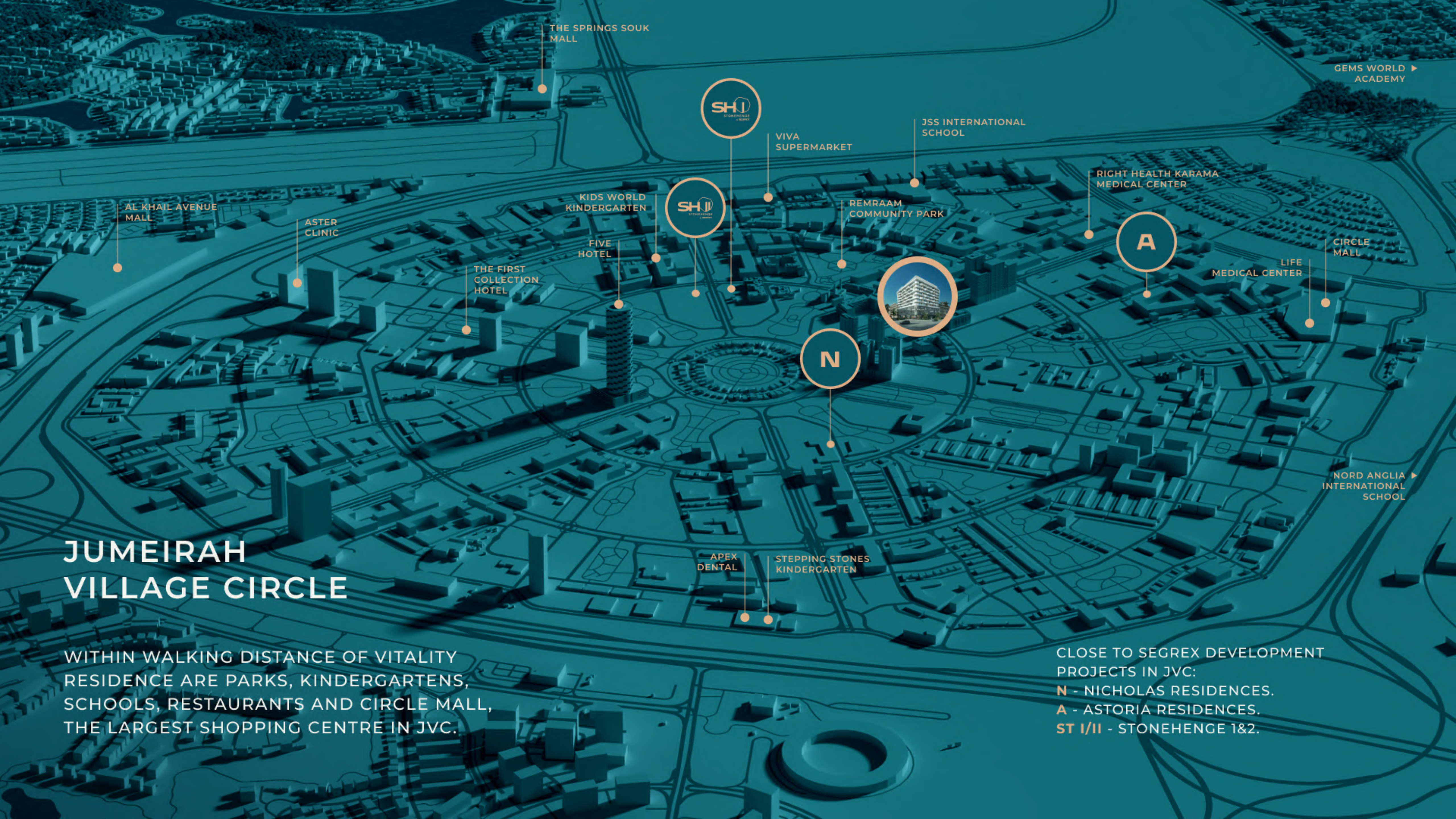


LOCATION

VITALITY RESIDENCES IS LOCATED IN THE HEART OF JUMEIRAH VILLAGE CENTRE, DUBAI, WITHIN AN ESTABLISHED PREMIUM NEIGHBOURHOOD, SURROUNDED BY NUMEROUS PARKS, WITH EXCELLENT ACCESSIBILITY TO ALL KEY AREAS OF DUBAI.

25

MINUTES TO
DUBAI WORLD
CENTRAL AIRPORT



THE SPRINGS SOUK MALL

GEMS WORLD ACADEMY

SHJ
STONEHENGE 1&2

VIVA SUPERMARKET

JSS INTERNATIONAL SCHOOL

AL KHAIL AVENUE MALL

ASTER CLINIC

KIDS WORLD KINDERGARTEN

SHJ
STONEHENGE 1&2

REMRAAM COMMUNITY PARK

RIGHT HEALTH KARAMA MEDICAL CENTER

A

CIRCLE MALL

LIFE MEDICAL CENTER

THE FIRST COLLECTION HOTEL

FIVE HOTEL

N

NORD ANGLIA INTERNATIONAL SCHOOL

APEX DENTAL

STEPPING STONES KINDERGARTEN

JUMEIRAH VILLAGE CIRCLE

WITHIN WALKING DISTANCE OF VITALITY RESIDENCE ARE PARKS, KINDERGARTENS, SCHOOLS, RESTAURANTS AND CIRCLE MALL, THE LARGEST SHOPPING CENTRE IN JVC.

CLOSE TO SEGREX DEVELOPMENT PROJECTS IN JVC:
N - NICHOLAS RESIDENCES.
A - ASTORIA RESIDENCES.
ST I/II - STONEHENGE 1&2.



A woman is shown in profile, wearing a voluminous, flowing dress with a color gradient from deep blue on the left to bright orange on the right. The background is a soft, warm glow of golden light with some blurred circular patterns. The overall mood is elegant and sophisticated.

VITALITY

RESIDENCE

IS THE EVERYTHING
FOR LIFE



GYM & FITNESS



SWIMMING POOL & KIDS SWIMMING POOL



OUTDOOR YOGA



BBQ ZONE



KIDS PLAY AREA



SAUNA



ZONE WITH FOUNTAINS



CHILLOUT YARD



MEETING ZONE



BAKERY & COFFEE



COWORKING IN LOBBY



RESTAURANT



PARKING



EV CHARGES



GROCERY STORE

ROOF FLOOR

FIRST FLOOR

PARKING FLOORS

GROUND FLOOR

BASEMENT FLOOR





VITALITY

RESIDENCE

GROUND FLOOR
AMENITIES


GROUND FLOOR





 COWORKING IN LOBBY

 MEETING ZONE

CENTRAL LOBBY

 GROCERY STORE

 BAKERY & COFFEE

 RESTAURANT



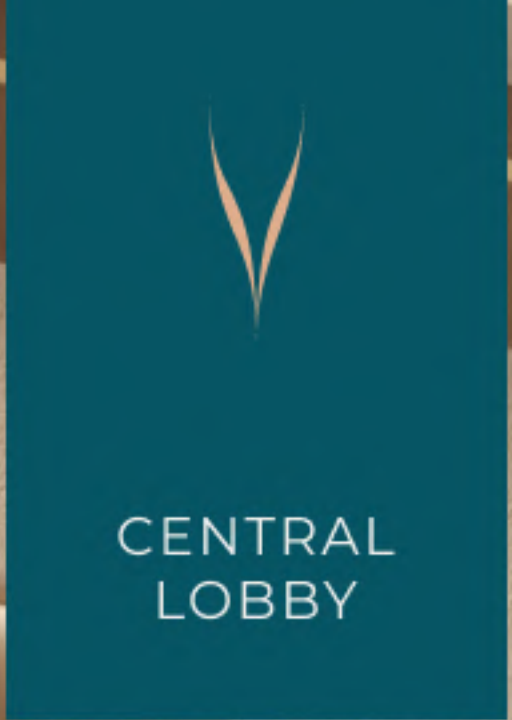
GROCERY STORE



BAKERY & COFFEE



RESTAURANT



VITALITY
RESIDENCES

RECEPTION




MEETING
ZONE





COWORKING
IN LOBBY





ELEVATORS





FOYER





PARKING
WITH
EV CHARGES





VITALITY

RESIDENCE

FIRST FLOOR
AMENITIES

FIRST FLOOR

GYM & WORKOUT



SAUNA



KIDS AREA



CHILLOUT YARD



ZONE WITH FOUNTAINS





CHILLOUT
YARD





WORKOUT
AREA





GYM &
FITNESS





ZONE WITH
FOUNTAINS





SAUNA





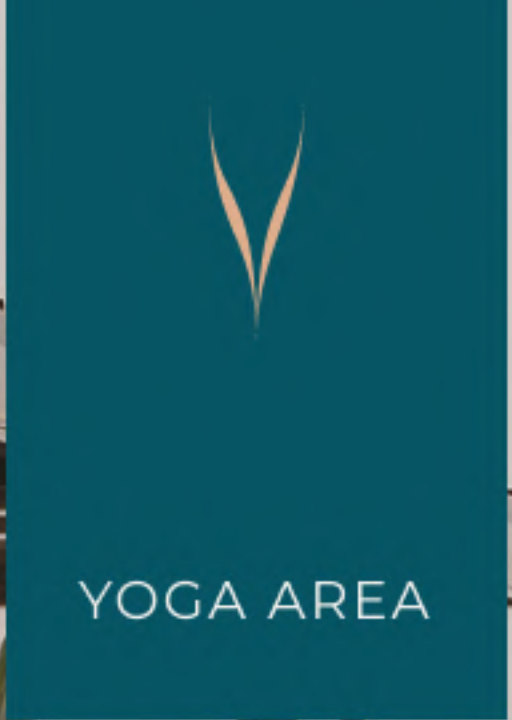
VITALITY

RESIDENCE

TOP FLOOR
AMENITIES

TOP FLOOR







BBQ ZONE




POOL &
KIDS POOL





VITALITY

RESIDENCE

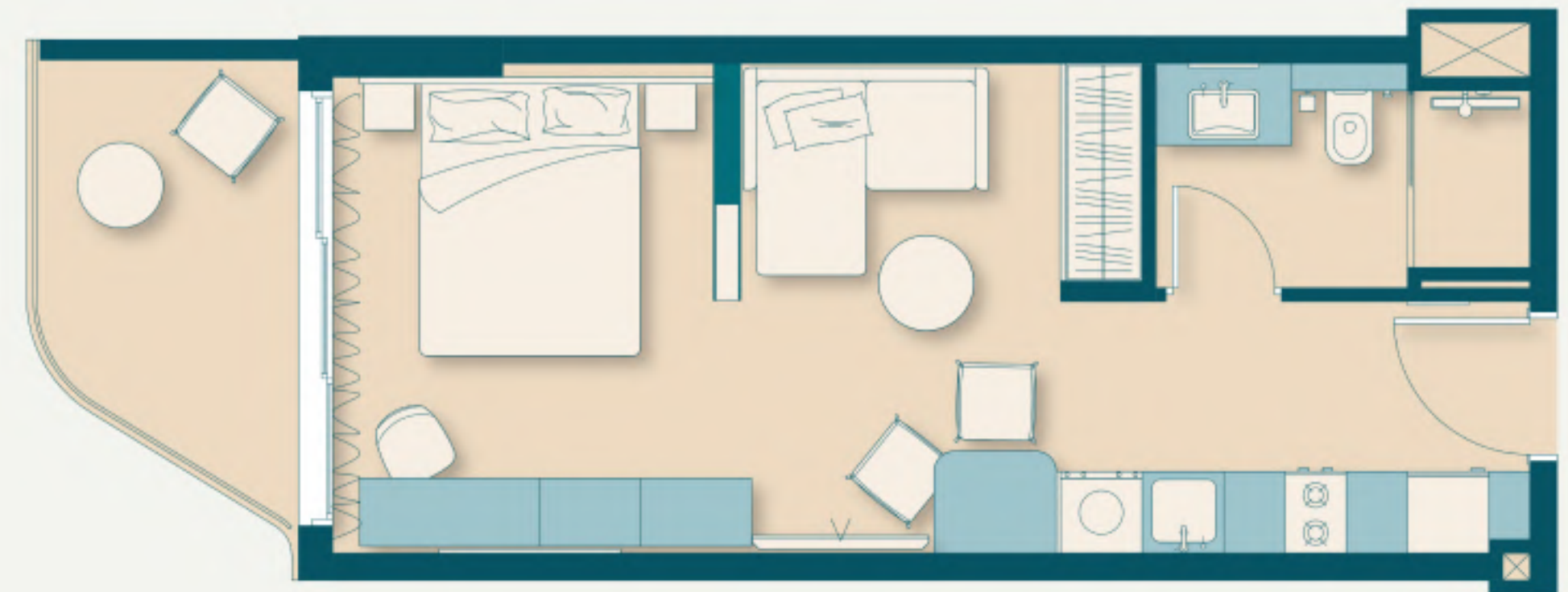
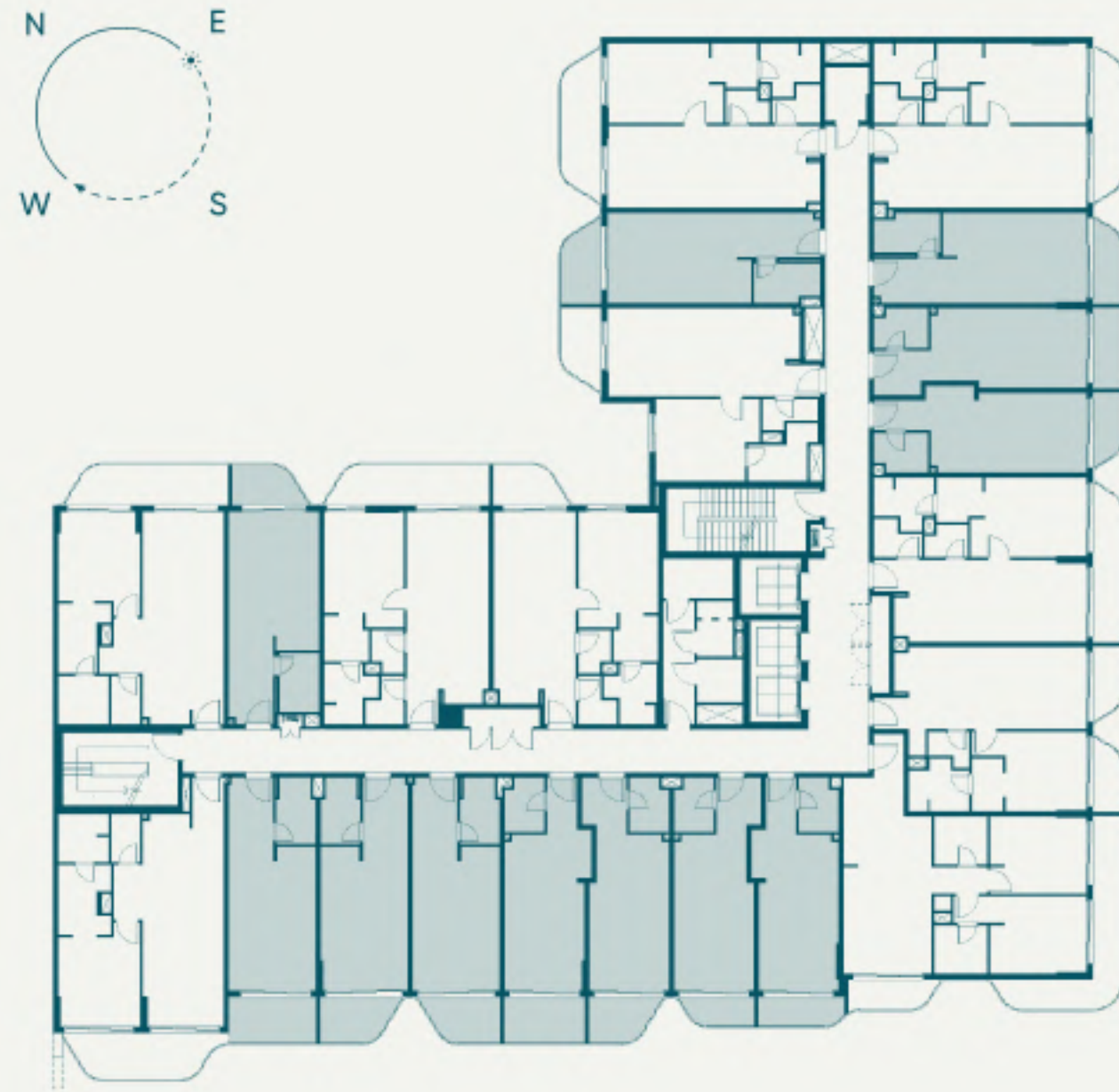
APARTMENTS

86

STUDIO
APARTMENTS



AREA:
381 SQ.FT TO 561,45 SQ.FT









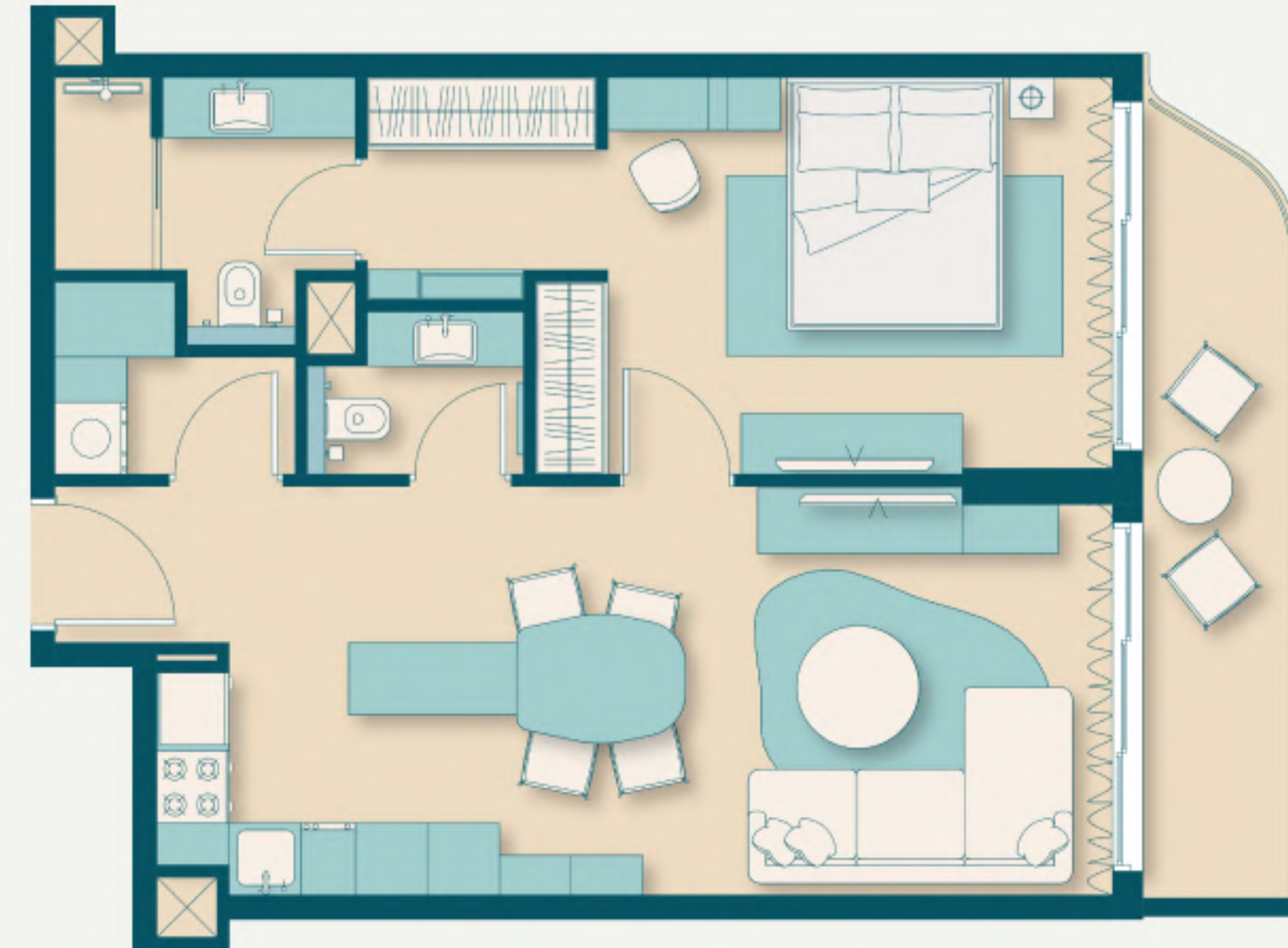
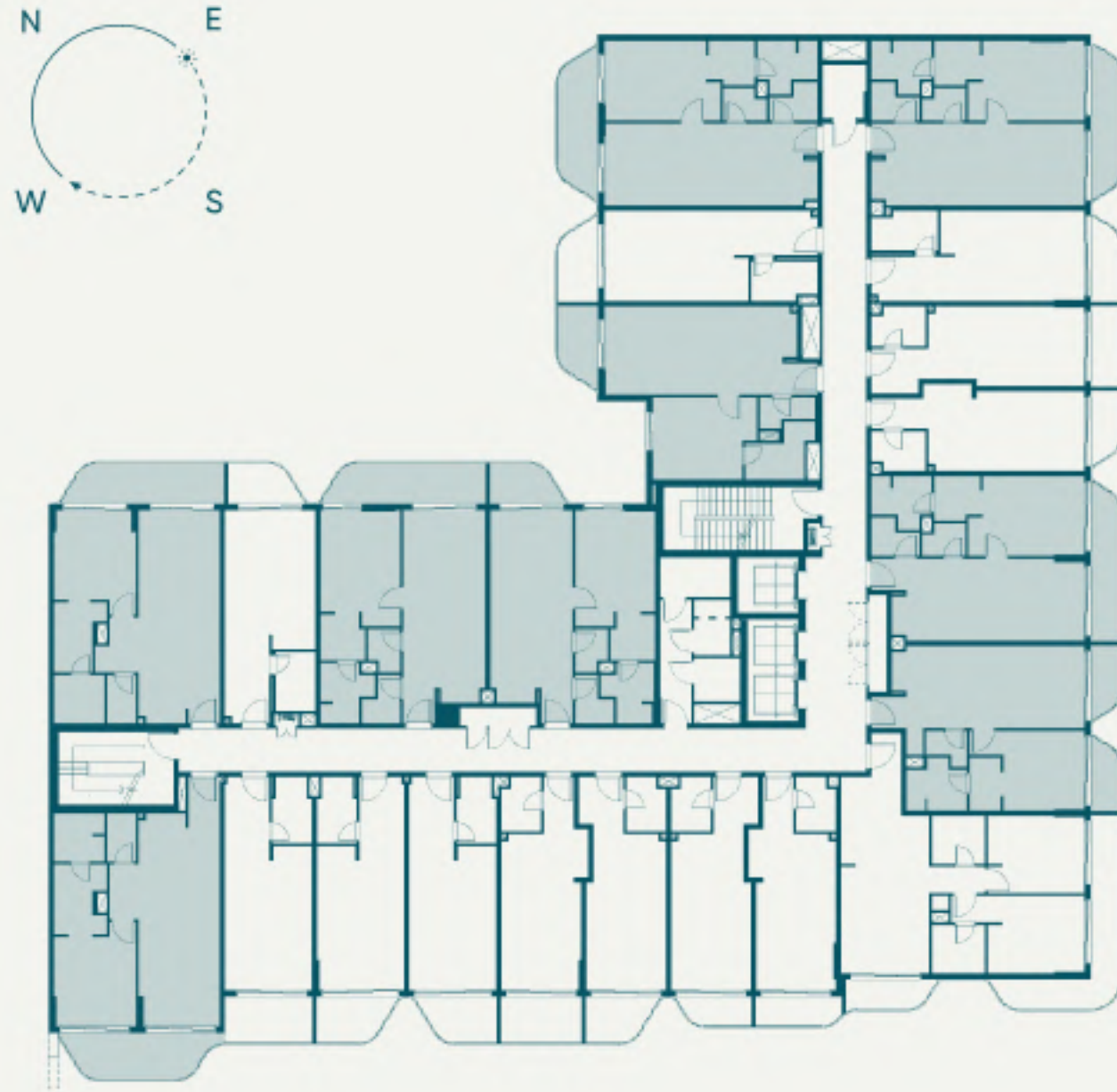
A modern kitchen and dining area. The kitchen features white cabinetry, a marble backsplash, and a built-in microwave. A central island with a dark countertop and open shelving is positioned between the kitchen and the dining area. The dining area has a round table and two chairs. A large window with white curtains provides a view of the outdoors. The ceiling has recessed lighting and a circular pendant light. The floor is made of large, light-colored tiles.

66

ONE BEDROOM
APARTMENTS

ONE
BEDROOM
APARTMENT

AREA:
660 SQ.FT TO 1023 SQ.FT









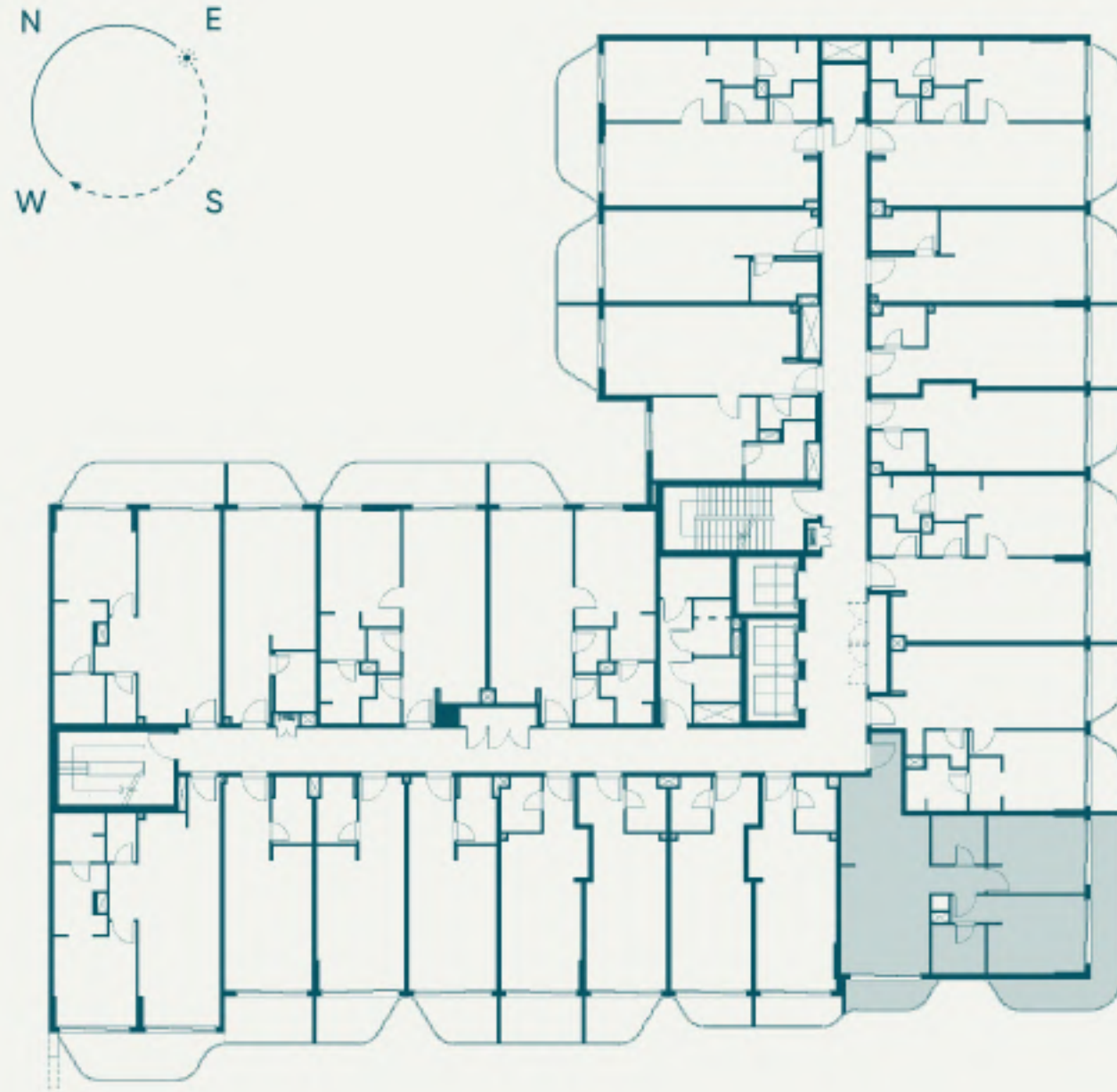


TWO BEDROOM
APARTMENTS



TWO
BEDROOM
APARTMENT

AREA:
1053 SQ.FT TO 1299 SQ.FT







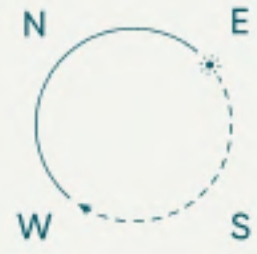




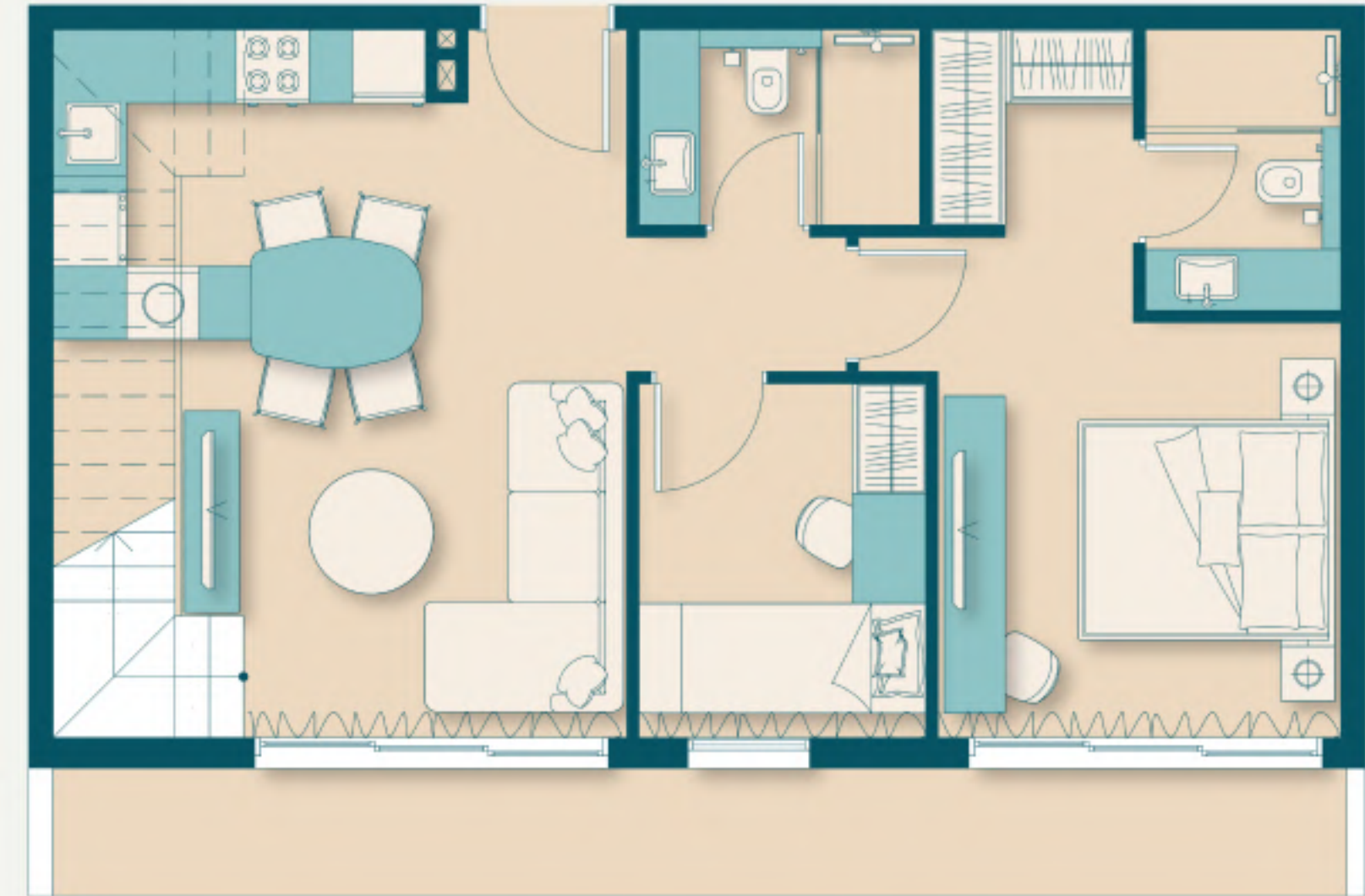
4

ONE BEDROOM+MAIDS
APARTMENTS
WITH PRIVATE GARDEN

ONE
BEDROOM
+ MAIDS
APARTMENTS
WITH PRIVATE
GARDEN



AREA:
1876 SQ.FT TO 1952 SQ.FT













VITALITY

RESIDENCE

PAYMENT PLAN

PAYMENT PLAN
50/50

AT THE TIME OF BOOKING	20%+4% DLD FEE
JUNE 2025	15%
SEPTEMBER 2025	15%
MARCH 2026	50%

BY



DEVELOPER

THE DEVELOPER OF VITALITY RESIDENCE IS SEGREX DEVELOPMENT, WHICH HAS BEEN DEVELOPING EXCLUSIVE PROJECTS IN DUBAI FOR 3 YEARS. THE COMPANY IS MANAGED BY A TEAM OF TOP MANAGERS WITH EXTENSIVE EXPERIENCE IN THE CONSTRUCTION AND IMPLEMENTATION OF RESIDENTIAL PROJECTS WITH A TOTAL AREA OF MORE THAN 500,000 SQUARE FEET IN DUBAI AND MORE THAN 1 MILLION SQUARE METRES OF LUXURY REAL ESTATE IN MOSCOW AND ST. PETERSBURG.

AMONG THE SUCCESSFULLY COMPLETED PROJECTS IN DUBAI ARE MORE THAN 20 PRIVATE PREMIUM VILLAS, RESIDENTIAL HOUSES IN JVC "ASTORIA" AND "NICHOLAS". SEGREX DEVELOPMENT IS CURRENTLY CONSTRUCTING TWO RESIDENTIAL DEVELOPMENTS STONEHENGE 1 AND STONEHENGE 2, WHICH ARE SCHEDULED FOR COMPLETION IN EARLY 2025.